

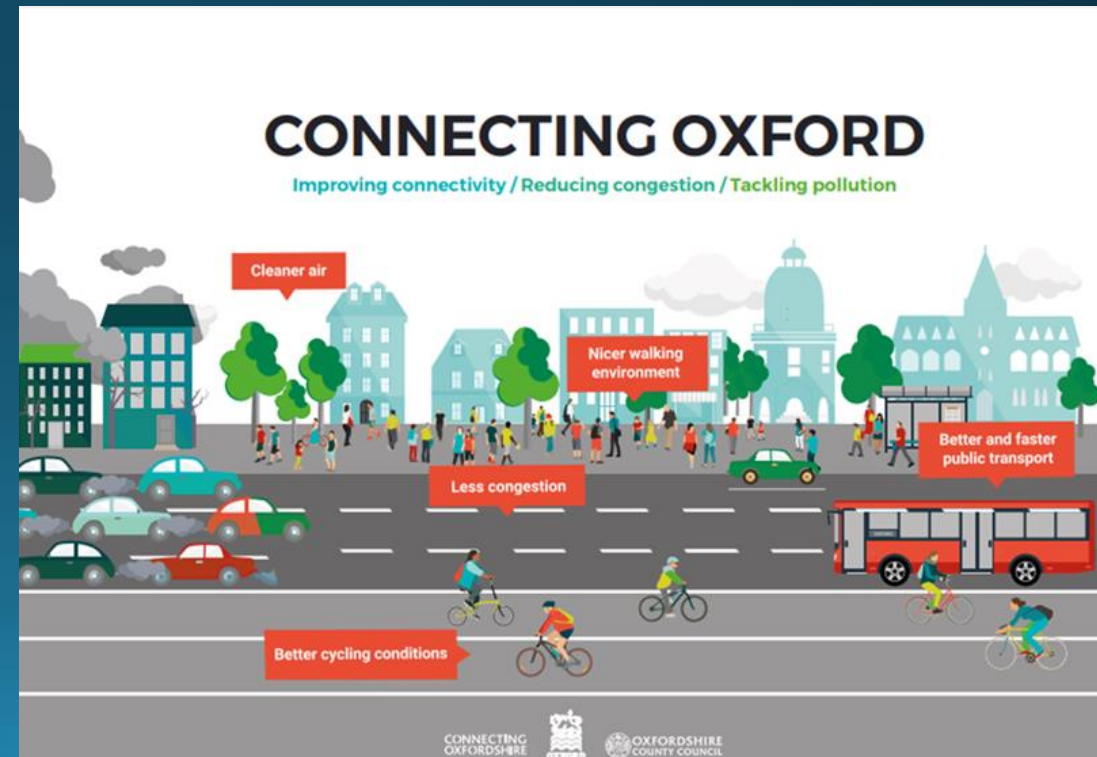
The Expressway – an 'environmental disaster'?

- All new developments have impacts.....
- Do the suggested 'benefits' justify the damage?

Let's remember one thing:

‘Wider or new roads can give short-term relief but only add to traffic growth, congestion and pollution in the long term’

(From: Connecting Oxford, 2019, agreed by Oxford City and Oxfordshire County Councils)



This is not just one road....

- It's a hundred (or more) new roads to service the new homes planned for the area.
- The impacts spread beyond the immediate route.
- ***And remember:***
- 'The government has committed to leave the environment in a better state than they found it'.

The issues:

- Loss of greenspace and wildlife habitat
- Transport impacts
- Air pollution and noise
- Climate Change



Loss of greenspace and wildlife habitat

Impacts vary along the possible route. The area around Oxford is more built up. The spaces that offer a route are in some cases not built on because of their value. The most serious concerns - designated sites and nature reserves include (depending on the route):

- Cothill Fen
- Oxford Meadows
- Otmoor Basin
- Upper Ray Valley
- Bernwood Forest
- Wytham Woods
- Bagley Wood
- Sandford Brake
- Brasenose Wood and Shotover Hill.



Loss of greenspace and wildlife habitat

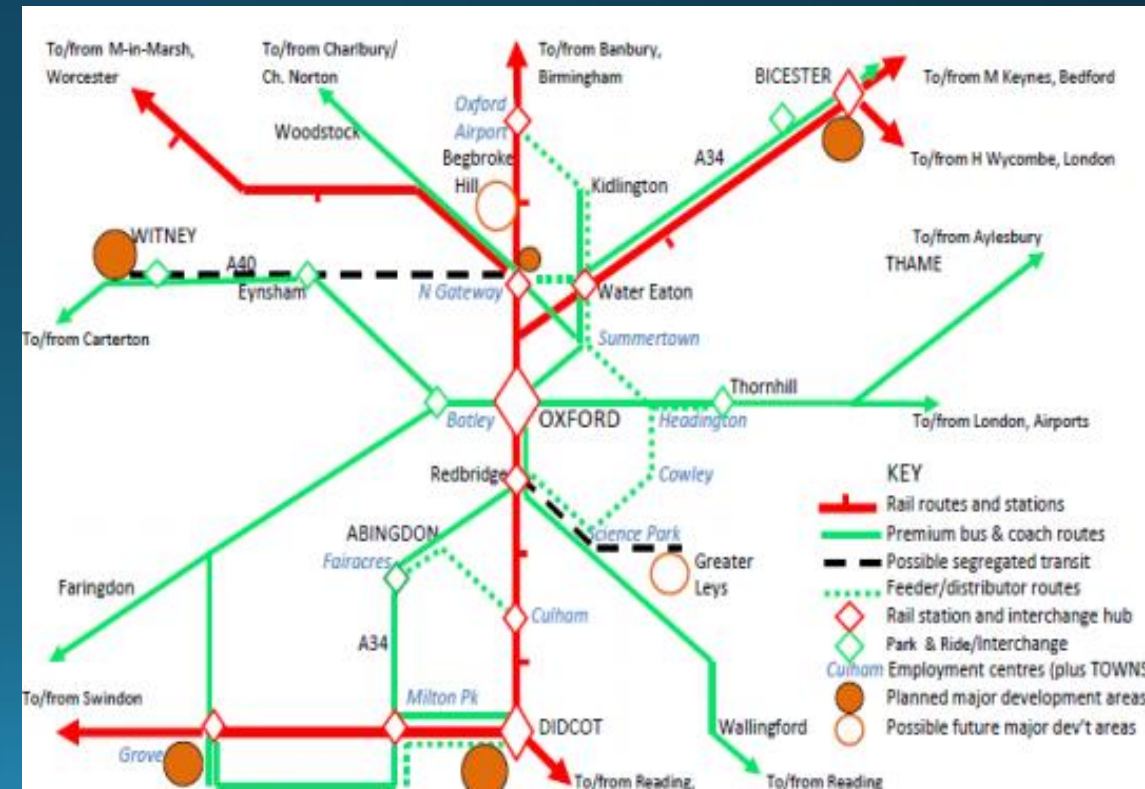
- 'The government has committed to leave the environment in a better state than they found it'
- '*Net biodiversity gain*' – but planting new trees would not 'make up for' damage to unique sites or ancient woodlands.
- The other sites: there are many less 'significant' green spaces that are nevertheless very important to local people.
- We are aiming to map these to highlight the impacts on local communities.

Transport impacts

Transport systems all have environmental impacts at some level. We need a transport policy and system that delivers:

- Good and fair access to services for both urban and rural communities.
- Better public health
- A zero carbon economy

A low / zero carbon system will have good rail services at its core – these will be expensive. The investment in a new road system would be better spent on providing a real alternative.



Air pollution, noise and local impacts

- Any major new road system causes significant noise and pollution issues
- The full range of air pollution impacts is becoming ever clearer
- It is claimed that electrification of transport will resolve this, but this is still a long way off.
- There may be significant health impacts for affected communities (potentially including Botley and Cumnor)
- Local access may also be limited by turning existing roads into an 'expressway'

Climate Change

We need urgent action to tackle the climate crisis

- All our councils have declared a 'climate emergency'
- We have a legal target of net zero carbon by 2050
- New roads "*only add to traffic growth,*
- *congestion and pollution in the long term*"
- A sustainable transport system must be a priority

So....

The Expressway is a huge step in the wrong direction at just the time when we need to make real change.



Environmental Disaster?

- Development to meet real needs can be done with no need for a motorway style road.
- No credible way has been shown to ensure 'net biodiversity gain'
- We need to move to a zero carbon transport system – money should be diverted to deliver this
- Every possible route in the current corridor has major environmental problems
- There is no 'least worst route' when all cause irreparable damage,

SO...

NOT HERE

NOT THERE



**Friends of
the Earth
Oxford**



NOT ANYWHERE